

Job Name:

System Reference:

Date:

Indoor Unit:
PCA-A36KA7Outdoor Unit:
 PUZ-A36NKA7
 PUZ-A36NKA7-BS**INDOOR UNIT FEATURES**

- Airflow settings for high and low ceiling applications
- Knock-out for outside-air intake
- Optional i-see Sensor[®] for air distribution and energy saving
- Auto fan speed mode
- Filter status indicator
- Easy-to-clean, washable filter
- Suspends from ceiling for quick and easy installation
- Ideal for larger retail stores, classrooms, and restaurants

OUTDOOR UNIT FEATURES

- Variable speed INVERTER-driven compressor
- Suction accumulator pre-charged with refrigerant volume for piping length up to 100 ft (70 ft. for A12/18/24/30)
- 24-hour continuous operation (cooling mode)
- High pressure protection
- Fast restart due to bypass valve make it ideal for equipment cooling applications, such as data centers
- Superior energy and operational efficiency

SPECIFICATIONS: PCA-A36KA7 & PUZ-A36NKA7(-BS)

Cooling ¹	Maximum Capacity	BTU/H	36,000
	Rated Capacity	BTU/H	36,000
	Minimum Capacity	BTU/H	16,000
	Maximum Power Input	W	3,270
	Rated Power Input	W	3,270
	Moisture Removal	Pints/h	8.70
	Sensible Heat Factor		0.73
	Power Factor	%	94.20
Heating at 47°F ²	Maximum Capacity	BTU/H	40,000
	Rated Capacity	BTU/H	38,000
	Minimum Capacity	BTU/H	17,900
	Maximum Power Input	W	3,420
	Rated Power Input	W	2,410
	Power Factor	%	92.70
Heating at 17°F ³	Maximum Capacity	BTU/H	24,400
	Rated Capacity	BTU/H	21,000
	Maximum Power Input	W	2,490
	Rated Power Input	W	2,430
Efficiency	SEER		19.10
	EER ¹		11.00
	HSPF (IV)		10.20
	COP at 47°F ²		4.62
	COP at 17°F ³		2.51
Electrical	Voltage, Phase, Frequency		208 / 230V, 1-phase, 60 Hz
	Guaranteed Voltage Range	V AC	198 – 253
	Voltage: Indoor - Outdoor, S1-S2	V AC	208 / 230
	Voltage: Indoor - Outdoor, S2-S3	V DC	24
	Voltage: Indoor - Remote controller	V DC	12
	Recommended Fuse/Breaker Size (Outdoor)	A	30
	Recommended Wire Size (Indoor - Outdoor)	AWG	14
Indoor Unit	MCA	A	2.00
	Fan Motor Full Load Amperage	A	0.97
	Fan Motor Output	W	160
	Airflow Rate, Dry	CFM	775-850-920-990
	Airflow Rate, Wet	CFM	705-775-850-920
	External Static Pressure	in.WG	n/a
	Sound Pressure Level	dB(A)	37-39-41-43
	Drain Pipe Size	In. (mm)	1-1/32 (26)
	Condensate Lift Mechanism, Max. Distance	In. (mm)	n/a
	Heat Exchanger Type		Plate fin coil
	External Finish Color		White Munsell 6.4Y 8.9/0.4
	Unit Dimensions	W: In. (mm)	63 (1600)
		D: In. (mm)	26-3/4 (680)
		H: In. (mm)	9-1/16 (230)
	Package Dimensions	W: In.	53-2/16
D: In.		29-15/16	
H: In.		13-12/16	
Unit Weight	Lbs. (kg)	79 (36)	
Package Weight	Lbs.	93	
Indoor Unit Operating Temperature Range	Cooling Intake Air Temp (Maximum / Minimum)	°F	90 DB, 73 WB / 66 DB, 59 WB

SPECIFICATIONS: PCA-A36KA7 & PUZ-A36NKA7(-BS)

	Heating Intake Air Temp (Maximum / Minimum)	°F	82 DB / 50 DB	
Outdoor Unit	MCA	A	25	
	MOCP	A	31	
	Fan Motor Full Load Amperage	A	0.5 + 0.5	
	Fan Motor Output	W	74 + 74	
	Airflow Rate	CFM	3,880	
	Refrigerant Control		Electronic Expansion Valve	
	Defrost Method		Reverse Cycle	
	Heat Exchanger Type		Cross fin	
	Sound Pressure Level, Cooling ¹	dB(A)	52	
	Sound Pressure Level, Heating ²	dB(A)	53	
	Compressor Type		INVERTER-driven twin rotary	
	Compressor Model		MNB33FBRMC-L	
	Compressor Rated Load Amps	A	8	
	Compressor Locked Rotor Amps	A	13	
	Compressor Oil Type // Charge	oz.	FV50S // 45	
	External Finish Color		Ivory Munsell 3Y 7.8/1.1	
	Base Pan Heater		n/a	
	Unit Dimensions	W: In. (mm)		41-5/16 (1050)
		D: In. (mm)		13+1-3/16 (330 + 30)
		H: In. (mm)		52-11/16 (1338)
Package Dimensions	W: In.		42-15/16	
	D: In.		17-11/16	
	H: In.		56-4/16	
Unit Weight	Lbs. (kg)		214 (97)	
Package Weight	Lbs.		245 (111)	
Outdoor Unit Operating Temperature Range	Cooling Intake Air Temp (Maximum / Minimum)	°F	115 DB / 0* DB	
	Heating Intake Air Temp (Maximum / Minimum)	°F	70 DB, 59 WB / -4 DB, -4 WB	
	Thermal Lock-out / Re-start Temperatures**	°F	-8 / -4 DB	
Refrigerant	Type		R410A	
	Charge	Lbs, oz	10 lbs, 6 oz	
Piping	Gas Pipe Size O.D. (Flared)	In.(mm)	5/8 (15.88)	
	Liquid Pipe Size O.D. (Flared)	In.(mm)	3/8 (9.52)	
	Maximum Piping Length	Ft. (m)	165 (50)	
	Maximum Height Difference	Ft. (m)	100 (30)	
	Maximum Number of Bends		15	

Notes

AHRI Rated Conditions (Rated data is determined at a fixed compressor speed)	¹ Cooling (Indoor // Outdoor)	°F	80 DB, 67 WB // 95 DB, 75 WB
	² Heating at 47°F (Indoor // Outdoor)	°F	70 DB, 60 WB // 47 DB, 43 WB
	³ Heating at 17°F (Indoor // Outdoor)	°F	70 DB, 60 WB // 17 DB, 15 WB

*Wind baffles required to operate below 23°F DB in cooling mode. PUZ with wind baffle: 0°F - 115°F.
 **System cuts out in heating mode to avoid thermistor error and automatically restarts at these temperatures.

SEACOAST PROTECTION

- External Outer Panel: Phosphate coating + Acrylic-Enamel coating
- Fan Motor Support: Epoxy resin coating (at edge face)
- Separator Assembly; Valve Bed: Epoxy resin coating (at edge face)
- "Blue Fin" treatment is an anti-corrosion treatment that is applied to the condenser coil to protect it against airborne contaminants.

ACCESSORIES: PCA-A36KA7

High Efficiency (MERV 8) Filter Element	□ PAC-SE81KF-E
High-efficiency Filter Element	□ PAC-SH90KF-E
Wireless Remote Receiver	□ PAR-FA32MA-W
Wireless Remote Controller	□ PAR-FL32MA-E
Controller Kit (Sender & Receiver)	□ PAR-SL93B-E
Controller Kit with i-see Sensor®	□ PAR-SA92MW-E
kumo touch™ RedLINK™ Wireless Controller	□ MHK2
Deluxe MA Remote Controller	□ PAR-40MAAU
Simple MA Controller	□ PAC-YT53CRAU-J
Touch MA Controller	□ PAR-CT01MAU-SB
Lockdown Bracket for Wireless, Hand-held, Remote Controller	□ RCMKP1CB
Wireless Temperature and Humidity Sensor	□ PAC-USWHS003-TH-1
Flush Mount Remote Temperature Sensor	□ PAC-USSEN001-FM-1
Wireless Interface 2	□ PAC-USWHS002-WF-2
Thermostat Interface	□ PAC-US444CN-1
kumo station®	□ PAC-WHS01HC-E
USNAP Interface	□ PAC-WHS01UP-E
IT Extender	□ PAC-WHS01IE-E
BACnet® and MODBUS® Interface	□ PAC-UKPRC001-CN-1
External Fan / Heater Control Relay Adapter	□ CN24RELAY-KIT-CM3
Remote Operation Adapter (with wire terminals for remote ON/OFF and operation status/ error) ¹	□ PAC-SF40RM-E
i-see Sensor®	□ PAC-SH91MK-E
External Drain Pump	□ PAC-SH84DM-E
Blue Diamond Sensor Extension Cable—15 Ft.	□ C13-103
MegaBlue Advanced Blue Diamond Condensate Pump w/ Reservoir & Sensor	□ X87-835 - 110 to 250V
MaxiBlue Advanced Blue Diamond Mini Condensate Pump w/ Reservoir & Sensor (208/230V) up to 48,000 BTU/H [recommended]	□ X87-721 - 208/230V
3 Pole Disconnect Switch (30A/600VUL) [fits 2"x4" utility] - Black	□ TAZ-MS303
3 Pole Disconnect Switch (30A/600VUL) [fits 2"x4" utility] - White	□ TAZ-MS303W

¹ Unable to use with wireless remote controller

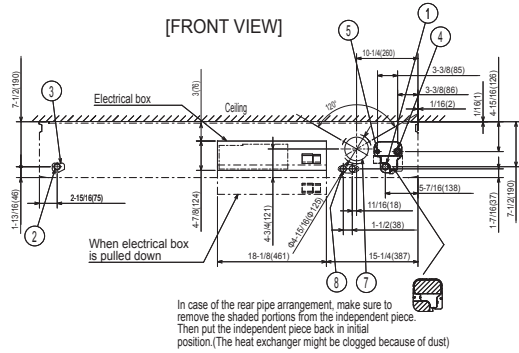
ACCESSORIES: PUZ-A36NKA7(-BS)

Twining Distribution Pipe (50:50)	<input type="checkbox"/> MSDD-50TR-E
Air Outlet Guide	<input type="checkbox"/> PAC-SH96SG-E (two pieces are required)
Front Wind Baffle	<input type="checkbox"/> WB-PA3 (two pieces are required)
Side Advanced Wind Baffle	<input type="checkbox"/> WB-SD6
Rear Advanced Wind Baffle	<input type="checkbox"/> WB-RE6
Drain Socket	<input type="checkbox"/> PAC-SG61DS-E
M-NET Converter	<input type="checkbox"/> PAC-SJ85MA-E
M-NET Converter	<input type="checkbox"/> PAC-SJ95MA-E
Control/Service Tool	<input type="checkbox"/> PAC-SK52ST
Condensing Unit Mounting Pad 24" x 42" x 3"	<input type="checkbox"/> ULTRILITE2
Outdoor Unit Stand—12" High	<input type="checkbox"/> QSMS1202M
Outdoor Unit Stand—18" High	<input type="checkbox"/> QSMS1802M
Outdoor Unit Stand—24"High	<input type="checkbox"/> QSMS2402M
Heavy Duty Wall Mounting Bracket for Outdoor Units—Coated Steel	<input type="checkbox"/> QSWB2000M-1
Heavy Duty Wall Mounting Bracket for Outdoor Units—316 Series Stainless Steel	<input type="checkbox"/> QSWBSS
3/8" x 5/8" x 10' / 1/2" Lineset (Twin-Tube Insulation)	<input type="checkbox"/> MPLS385812T-10
3/8" x 5/8" x 15' / 1/2" Lineset (Twin-Tube Insulation)	<input type="checkbox"/> MPLS385812T-15
3/8" x 5/8" x 30' / 1/2" Lineset (Twin-Tube Insulation)	<input type="checkbox"/> MPLS385812T-30
3/8" x 5/8" x 50' / 1/2" Lineset (Twin-Tube Insulation)	<input type="checkbox"/> MPLS385812T-50
3/8" x 5/8" x 65' / 1/2" Lineset (Twin-Tube Insulation)	<input type="checkbox"/> MPLS385812T-65
3/8" x 5/8" x 100' / 1/2" Lineset (Twin-Tube Insulation)	<input type="checkbox"/> MPLS385812T-100

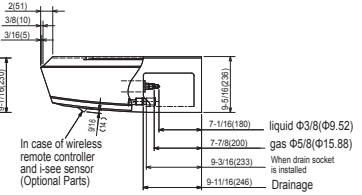
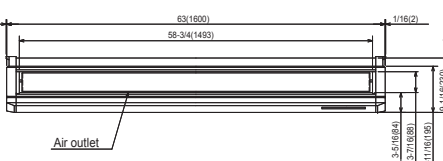
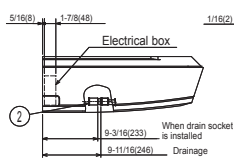
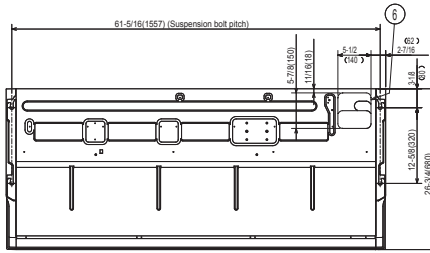
DIMENSIONS: PCA-A36KA7

Unit: in (mm)

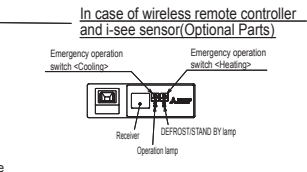
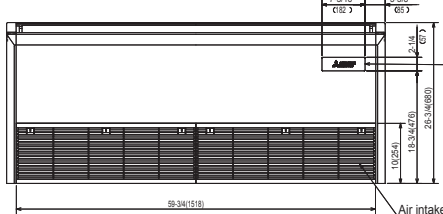
NOTES.
 1. Use M10 or W3/8 screw for anchor bolt.
 2. Please be sure when installing the drain pump (option parts),
 refrigerant pipe will be only upward.



In case of the rear pipe arrangement, make sure to remove the shaded portions from the independent piece. Then put the independent piece back in initial position. (The heat exchanger might be clogged because of dust)

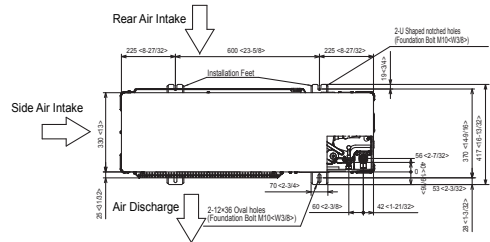
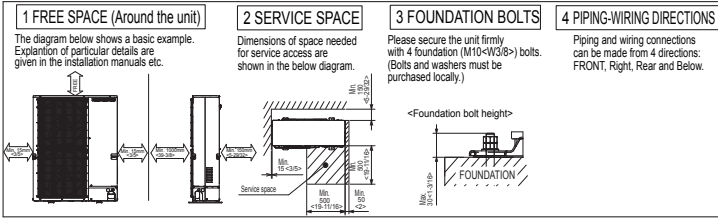


- ① Drainage pipe connection(1(26mm)I.D.)
 - ② Drainage pipe connection(for the left arrangement)
 - ③ Knockout hole for left drain-piping arrangement
 - ④ Refrigerant-pipe connection (gas pipe side/flared connection)
 - ⑤ Refrigerant-pipe connection (liquid pipe side/flared connection)
 - ⑥ Knockout hole for upper drain pipe arrangement
 - ⑦ Knockout hole for fresh air intake Φ 3-15/16(Φ 100)
 - ⑧ Knockout hole for wiring arrangement Φ 7/8(Φ 22)
- Accessory...Drain socket (1(26mm)I.D.)



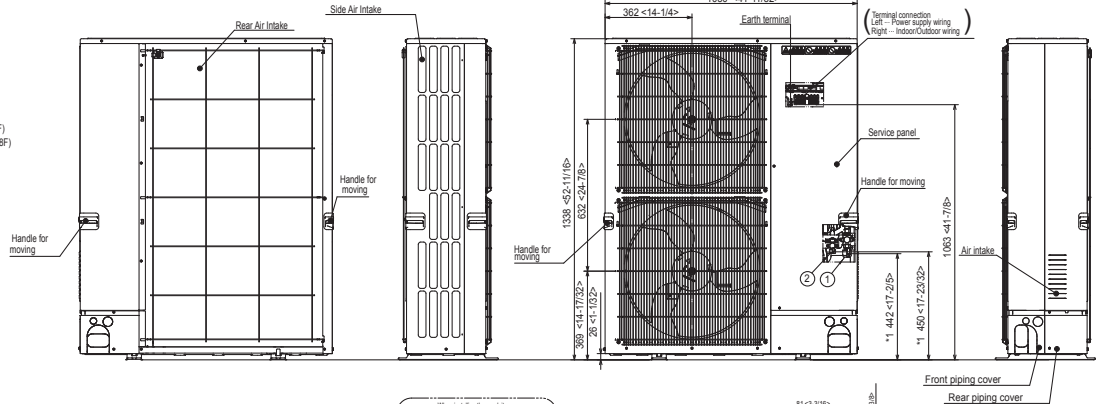
DIMENSIONS: PUZ-A36NKA7(-BS)

Unit: mm<in>



Example of Notes

- ① Refrigerant GAS pipe connection (FLARE) ϕ 15.88(5/8F)
- ② Refrigerant LIQUID pipe connection (FLARE) ϕ 9.52(3/8F)
- * -- Indication of STOP VALVE connection location.



Piping Knockout Hole Details

