




| | |
|-------------------|-------|
| Job Name: | |
| System Reference: | Date: |

| Indoor Unit: MSY-GL24NA | Outdoor Unit: MUY-GL24NA | Wireless Remote Controller |
|---|--|---|
|  |  |  |

GENERAL FEATURES

- Slim wall-mounted indoor units provide zone comfort control
- The outdoor unit powers the indoor unit, and should a power outage occur, the system is automatically restarted when power returns
- INVERTER-driven compressor and LEV provide high efficiency and comfort while using only the energy needed to maintain maximum performance
- Multiple fan speed options: Quiet, Low, Medium, High, Super-high, Auto
- Multiple control options available:
 - Hand-held Remote Controller (provided with unit)
 - kumo cloud® smart device app for remote access
 - Third-party interface options
 - Wired or wireless controllers
- Quiet operation
- Smart Set: recalls a preferred preset temperature setting at the touch of a button
- Blue Fin anti-corrosion treatment applied to the outdoor unit heat exchanger for increased coil protection and longer life

SPECIFICATIONS: MSY-GL24NA & MUY-GL24NA

| | | | |
|---|--|-------------|-----------------------------|
| Cooling ¹ | Maximum Capacity | BTU/H | 31,400 |
| | Rated Capacity | BTU/H | 22,400 |
| | Minimum Capacity | BTU/H | 8,200 |
| | Maximum Power Input | W | 3,522 |
| | Rated Power Input | W | 1,800 |
| | Moisture Removal | Pints/h | 5.1 |
| | Sensible Heat Factor | | 0.75 |
| | Power Factor | % | 99 / 99 |
| Efficiency | SEER | | 20.5 |
| | EER ¹ | | 12.5 |
| | ENERGY STAR [®] certified units (ENERGY STAR products are third party certified by an EPA-recognized Certification Body.) | | YES |
| Electrical | Voltage, Phase, Frequency | | 208/230V, 1 phase, 60Hz |
| | Guaranteed Voltage Range | V AC | 187 - 253 |
| | Voltage: Indoor - Outdoor, S1-S2 | V AC | 208 / 230 |
| | Voltage: Indoor - Outdoor, S2-S3 | V DC | 24 |
| | Short-circuit Current Rating (SCCR) | kA | 5 |
| | Recommended Fuse/Breaker Size (Outdoor) | A | 20 |
| | Recommended Wire Size (Indoor - Outdoor) | AWG | 14 |
| Indoor Unit | MCA | A | 1 |
| | MOCP | A | 15 |
| | Blower Motor Full Load Amperage | A | 0.76 |
| | Blower Motor Output | W | 56 |
| | Airflow Rate at Cooling, Dry | CFM | 738-628-544-469-388 |
| | Airflow Rate at Cooling, Wet | CFM | 661-562-487-420-347 |
| | Sound Pressure Level (Cooling) | dB(A) | 53-49-45-41-34 |
| | Drain Pipe Size | In. (mm) | 5/8 (15.88) |
| | Heat Exchanger Type | | Plate fin coil |
| | External Finish Color | | Munsell 1.0Y 9.2/0.2 |
| | Unit Dimensions | W: In. (mm) | 43-5/16 (1,100) |
| | | D: In. (mm) | 9-3/8 (238) |
| | | H: In. (mm) | 12-13/16 (325) |
| | Package Dimensions | W: In. (mm) | 45-1/2 (1,160) |
| | | D: In. (mm) | 12-3/4 (320) |
| | | H: In. (mm) | 15-1/2 (390) |
| Unit Weight | Lbs. (kg) | 37 (17) | |
| Package Weight | Lbs. (kg) | 42 (19) | |
| Indoor Unit Operating Temperature Range | Cooling Intake Air Temp (Maximum / Minimum)* | °F | 90 DB, 73 WB / 67 DB, 57 WB |
| Outdoor Unit | MCA | A | 17.1 |
| | MOCP | A | 20 |
| | Fan Motor Full Load Amperage | A | 0.93 |
| | Fan Motor Output | W | 77 |
| | Airflow Rate | CFM | 1,769 |
| | Refrigerant Control | | LEV |
| | Defrost Method | | Reverse cycle |
| | Heat Exchanger Type | | Plate fin coil |
| | Sound Pressure Level, Cooling ¹ | dB(A) | 55 |
| | Compressor Type | | DC INVERTER-driven |
| | Compressor Model | | SNB172FQKMT |
| Compressor Rated Load Amps | A | 12.9 | |

SPECIFICATIONS: MSY-GL24NA & MUY-GL24NA

| | | | | |
|--|--|-------------|--------------------|---------------|
| | Compressor Locked Rotor Amps | A | 16.1 | |
| | Compressor Oil Type // Charge | oz. | FV50S // 13.5 | |
| | External Finish Color | | Munsell 3Y 7.8/1/1 | |
| | Base Pan Heater | | N/A | |
| | Unit Dimensions | W: In. (mm) | | 33-1/16 (840) |
| | | D: In. (mm) | | 13 (330) |
| | | H: In. (mm) | | 34-5/8 (880) |
| | Package Dimensions | W: In. (mm) | | 38-9/16 (980) |
| | | D: In. (mm) | | 16-9/16 (420) |
| | | H: In. (mm) | | 39 (990) |
| Unit Weight | Lbs. (kg) | | 119 (54) | |
| Package Weight | Lbs. (kg) | | 139 (63) | |
| Outdoor Unit Operating Temperature Range | Cooling Air Temp (Maximum / Minimum)* | °F | 115 / 14 | |
| | Cooling Thermal Lock-out / Re-start Temperatures** | °F | -4 / 0 | |
| Refrigerant | Type | | R410A | |
| | Charge | Lbs, oz | 4, 3 | |
| Piping | Gas Pipe Size O.D. (Flared) | In. (mm) | 5/8 (15.88) | |
| | Liquid Pipe Size O.D. (Flared) | In. (mm) | 3/8 (9.52) | |
| | Maximum Piping Length | Ft. (m) | 100 (30) | |
| | Maximum Height Difference | Ft. (m) | 50 (15) | |
| | Maximum Number of Bends | | 10 | |

Notes

| | | | |
|--|--|----|------------------------------|
| AHRI Rated Conditions (Rated data is determined at a fixed compressor speed) | ¹ Cooling (Indoor // Outdoor) | °F | 80 DB, 67 WB // 95 DB, 75 WB |
| <p>*Applications should be restricted to comfort cooling only; equipment cooling applications are not recommended for low ambient temperature conditions. **System cuts out in heating mode to avoid thermistor error and automatically restarts at these temperatures.</p> | | | |

ACCESSORIES: MSY-GL24NA

| | |
|--|-------------------------|
| Anti-allergy Enzyme Filter | □ MAC-2310FT-E |
| kumo touch™ RedLINK™ Wireless Controller | □ MHK2 |
| Deluxe MA Remote Controller ¹ | □ PAR-40MAAU |
| Simple MA Controller ¹ | □ PAC-YT53CRAU-J |
| Touch MA Controller ¹ | □ PAR-CT01MAU-SB |
| Wireless Temperature and Humidity Sensor | □ PAC-USWHS003-TH-1 |
| System Control Interface ² | □ MAC-334IF-E |
| Wireless Interface 2 | □ PAC-USWHS002-WF-2 |
| Thermostat Interface | □ PAC-US444CN-1 |
| Thermostat Interface | □ PAC-US445CN-1 |
| kumo station® for kumo cloud® | □ PAC-WHS01HC-E |
| USNAP Interface | □ PAC-WHS01UP-E |
| IT Extender | □ PAC-WHS01IE-E |
| BACnet® and MODBUS® Interface | □ PAC-UKPRC001-CN-1 |
| Lockdown Bracket for Hand-held Remote Controllers | □ RCMKP1CB |
| Blue Diamond Sensor Extension Cable — 15 Ft. | □ C13-103 |
| Blue Diamond Alarm Extension Cable — 6.5 Ft. | □ C13-192 |
| Blue Diamond MultiTank — collection tank for use with multiple pumps | □ C21-014 |
| Blue Diamond Rubber Foot Pads | □ F10-010 |
| Mini Condensate Pump — 230 volt application | □ SI30-230 |
| MegaBlue Advanced Blue Diamond Condensate Pump w/ Reservoir & Sensor | □ X87-835 - 110 to 250V |
| MaxiBlue Advanced Blue Diamond Mini Condensate Pump w/ Reservoir & Sensor (110V) up to 48,000 BTU/H[recommended] | □ X87-711 - 110V |
| Advanced Blue Diamond Mini Condensate Pump w/ Reservoir & Sensor (208/230V) [recommended] | □ X87-721 - 208/230V |
| MicroBlue Blue Diamond Mini Condensate Pump (110/208/230V) up to 18,000 BTU/H | □ X85-003 |
| Fascia Kit for MicroBlue Pump – mounts the MicroBlue and sensor directly beneath the indoor unit | □ T18-016 |
| Refco Condensate Pump (100-240 VAC) up to 120,000 BTU/H | □ COMBI |
| Refco Condensate Pump (100-240 VAC) up to 120,000 BTU/H | □ GOBI-II |
| Drain Pan Level Sensor | □ SS610E |
| (30A/600V/UL) [fits 2" X 4" utility box] - Black | □ TAZ-MS303 |
| (30A/600V/UL) [fits 2" X 4" utility box] - White | □ TAZ-MS303W |
| Flexible Mini-Split Drain Hose | □ DRX-16 |

¹ Requires MAC-334IF-E

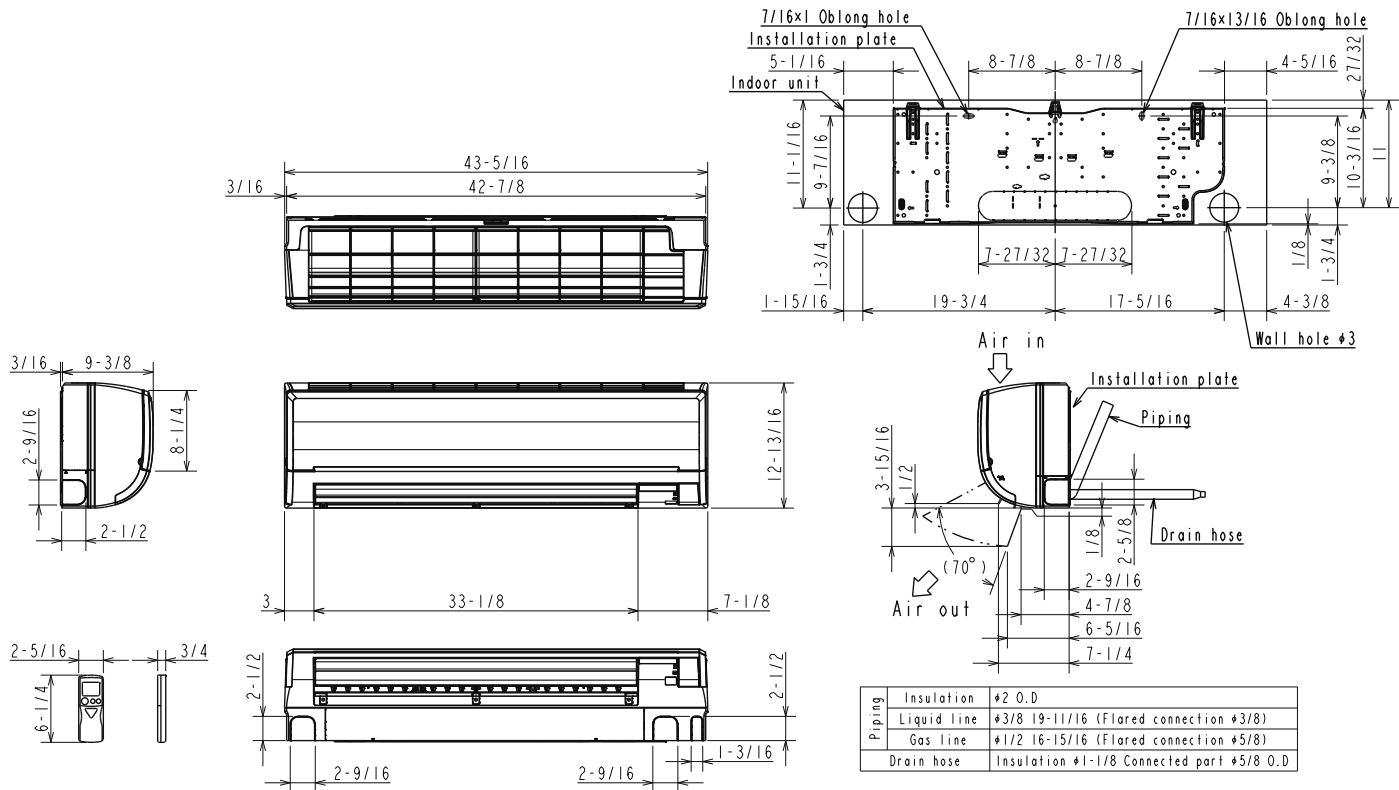
² Allows indoor units to connect to an MA Controller

ACCESSORIES: MUY-GL24NA

| | |
|--|-------------------|
| Air Outlet Guide | □ MAC-886SG-E |
| Drain Socket | □ MAC-860DS |
| Hail Guard | □ HG-A7 |
| Outdoor Unit 3-1/4 inch Mounting Base (Pair) - Plastic | □ DSD-400P |
| Condensing Unit Mounting Pad 16" x 36" x 3" | □ ULTRILITE1 |
| Outdoor Unit Stand — 12" High | □ QSMS1201M |
| Outdoor Unit Stand — 18" High | □ QSMS1801M |
| Outdoor Unit Stand — 24" High | □ QSMS2401M |
| Heavy Duty Wall Mounting Bracket— Coated Steel | □ QSWB2000M-1 |
| Heavy Duty Wall Mounting Bracket— 316 Series Stainless Steel | □ QSWBSS |
| 10' x 3/8" x 10' x 5/8" Lineset (Twin-Tube Insulation) | □ MPLS385812T-10 |
| 15' x 3/8" x 15' x 5/8" Lineset (Twin-Tube Insulation) | □ MPLS385812T-15 |
| 30' x 3/8" x 30' x 5/8" Lineset (Twin-Tube Insulation) | □ MPLS385812T-30 |
| 50' x 3/8" x 50' x 5/8" Lineset (Twin-Tube Insulation) | □ MPLS385812T-50 |
| 65' x 3/8" x 65' x 5/8" Lineset (Twin-Tube Insulation) | □ MPLS385812T-65 |
| 100' x 3/8" x 100' x 5/8" Lineset (Twin-Tube Insulation) | □ MPLS385812T-100 |

DIMENSIONS: MSY-GL24NA

Unit: inch



| | | |
|------------|-------------------|--|
| Piping | Insulation | #2 O.D |
| | Liquid line | #3/8 19-11/16 (Flared connection #3/8) |
| | Gas line | #1/2 16-15/16 (Flared connection #5/8) |
| Drain hose | Insulation #1-1/8 | Connected part #5/8 O.D |

DIMENSIONS: MUY-GL24NA

Unit: inch

REQUIRED SPACE

*1 20 in. or more when front and sides of the unit are clear

