

Job Name:

System Reference:

Date:



FEATURES

- Variable speed INVERTER-driven compressor
- Blue Fin Coating on heat exchanger
- Thermal Differential 1°F (with PAC-MKA32/52BC only)
- Branch box for simplified piping and installation flexibility
- Up to 8 indoor units connectable (six [6] if a PLA-A**EA7 is connected)
- Optional base pan heater
- Quiet outdoor unit operation as low as 54 dB(A)
- High pressure protection
- Compressor thermal protection
- Compressor overcurrent detection
- Fan motor overheating/voltage protection

SPECIFICATIONS: MXZ-8C48NA2

Indoor unit type			Non-Ducted	Mix	Ducted
Cooling ¹	Maximum Capacity	BTU/H	48,000	48,000	48,000
	Rated Capacity	BTU/H	48,000	48,000	48,000
	Minimum Capacity	BTU/H	15,500	15,500	15,500
	Maximum Power Input	W	3,930	4,320	4,800
	Rated Power Input	W	3,930	4,320	4,800
	Power Factor (208V, 230V)	%	98.6 / 98.6	98.9 / 98.9	99.2 / 99.2
Heating at 47°F ²	Maximum Capacity	BTU/H	54,000	54,000	54,000
	Rated Capacity	BTU/H	54,000	54,000	54,000
	Minimum Capacity	BTU/H	22,500	22,500	22,500
	Maximum Power Input	W	4,220	4,520	4,800
	Rated Power Input	W	4,220	4,520	4,800
	Power Factor (208V, 230V)	%	98.6 / 98.6	98.9 / 98.9	99.2 / 99.2
Heating at 17°F ³	Maximum Capacity	BTU/H	36,600	36,600	36,600
	Rated Capacity	BTU/H	33,000	33,000	33,000
	Maximum Power Input	W	5,200	5,550	5,200
	Rated Power Input	W	3,720	3,870	4,030
Heating at 5°F ⁴	Maximum Capacity	BTU/H	32,400	32,400	32,400
	Maximum Power Input	W	4,750	4,870	5,000
Efficiency	SEER		20.00	18.00	16.00
	EER ¹		12.20	11.10	10.00
	HSPF (IV)		11.5	10.8	10.1
	COP at 47° F ²		3.75	3.50	3.30
	COP at 17° F ³		2.00	1.90	2.00
	COP at 5° F ⁴		2.00	1.90	1.90
	ENERGY STAR® Certified		NO	NO	NO
Electrical	Voltage, Phase, Frequency		208 / 230V, 1-phase, 60 Hz		
	Guaranteed Voltage Range	V AC	198-253		
	Voltage: Indoor - Outdoor, S1-S2	V AC	208 / 230		
	Voltage: Indoor - Outdoor, S2-S3	V DC	24		
	Short-circuit Current Rating (SCCR)	5kA	5		
	Recommended Fuse/Breaker Size (Outdoor)	A	40		
	Recommended Wire Size (Indoor - Outdoor)	AWG	16		
Outdoor unit	MCA	A	35		
	MOCP	A	50		
	Fan Motor Full Load Amperage	A	0.6 + 0.6		
	Fan Motor Output	W	74		
	Airflow Rate Cooling / Heating	CFM	3,885 / 3,885		
	Refrigerant Control		Linear Expansion Valve		
	Defrost Method		Reverse Cycle		
	Heat Exchanger Type		Plate Fin Coil		
	Sound Pressure Level, Cooling ¹	dB(A)	51		
	Sound Pressure Level, Heating ²	dB(A)	54		
	Compressor Type		Hermetic		
	Compressor Model		ANB33FNHMT		
	Compressor Motor Output	kW	3.4		
	Compressor Rated Load Amps	A	19.0		
	Compressor Locked Rotor Amps	A	22.0		
	Compressor Oil Type // Charge	oz.	FV50S // 78		
	External Finish Color		Munsell 3Y 7.8/ 1.1		

SPECIFICATIONS: MXZ-8C48NA2

Indoor unit type			Non-Ducted	Mix	Ducted
	Base Pan Heater		Optional (PAC-SJ20BH-E)		
	Unit Dimensions	W: In. [mm]	41-11/32 [1,050]		
		D: In. [mm]	13 [330]		
		H: In. [mm]	52-11/16 [1,338]		
	Package Dimensions	W: In. [mm]	42-5/16 [1,090]		
		D: In. [mm]	17-3/4 [450]		
		H: In. [mm]	56-5/16 [1,430]		
Unit Weight	Lbs.[kg]	271 [123]			
Package Weight	Lbs.[kg]	295 [134]			
Outdoor unit operating temperature range	Cooling Intake Air Temp (Maximum / Minimum*)	°F	115 DB / 23°C DB		
	Cooling Thermal Lock-out / Re-start Temperatures		-1 / 3		
	Heating Intake Air Temp (Maximum / Minimum)	°F	70 DB / -4 DB		
	Heating Thermal Lock-out / Re-start Temperatures	°F	-9 / -4		
Refrigerant	Type		R410A		
	Charge	Lbs, oz	10 lbs, 9 oz		
Indoor unit connection	Maximum Number of Connected IDU		8 (6 ^{*A})		
	Minimum Number of Connected IDU		2		
	Maximum connected capacity	BTU/H	62,000		
	Minimum connected capacity	BTU/H	12,000		
Piping	Gas Pipe Size O.D. (Flared)	In.[mm]	5/8 [15.88]		
	Liquid Pipe Size O.D. (Flared)	In.[mm]	3/8 [9.52]		
	Total Piping Length	Ft. [m]	492 [150]		
	Maximum Height Difference ^{*B} , ODU above IDU	Ft. [m]	164 [50]		
	Maximum Height Difference ^{*B} , ODU below IDU	Ft. [m]	131 [40]		
	Maximum Height Difference ^{*B} , between branch boxes	Ft. [m]	49 [15]		
	Maximum Height Difference ^{*B} , between branch boxes and IDU	Ft. [m]	49 [15]		
	Max. Piping Length between ODU and Branch Box	Ft. [m]	180 [55]		
	Farthest Piping Length from ODU to IDU	Ft. [m]	262 [80]		
	Farthest Piping Length after Branch Box	Ft. [m]	82 [25]		
	Total Piping Length between Branch Boxes and IDU	Ft. [m]	311 [95]		
	Maximum Number of Bends for IDU		15		
	Maximum Number of Bends for ODU		120		

Notes

AHRI Rated Conditions (Rated data is determined at a fixed compressor speed)	¹ Cooling (Indoor // Outdoor)	°F	80 DB, 67 WB // 95 DB, 75 WB
	² Heating at 47°F (Indoor // Outdoor)	°F	70 DB, 60 WB // 47 DB, 43 WB
	³ Heating at 17°F (Indoor // Outdoor)	°F	70 DB, 60 WB // 17 DB, 15 WB
Conditions	⁴ Heating at 5°F (Indoor // Outdoor)	°F	70 DB, 60 WB // 5 DB, 5 WB

*Applications should be restricted to comfort cooling only; equipment cooling applications are not recommended for low ambient temperature conditions.

*^A when 1 or more PLA-A-EA7 connected

*^B Branch box should be placed within the level between the outdoor unit and indoor units

*^C 5°F DB - 115°F DB when optional wind baffles are installed

For reference to connected capacity charts, please refer MXC Series Operational Performance.

Although the maximum connectable capacity is 130%, the outdoor unit cannot provide more than 100% of the rated capacity. Please utilize this over capacity capability for load shedding or applications where it is known that all connected units will NOT be operating at the same time.

ACCESSORIES: MXZ-8C48NA2

Distribution pipe for Branch box (Flare Connection)	<input type="checkbox"/> MSDD-50AR-E
Distribution pipe for Branch box (Brazed Connection)	<input type="checkbox"/> MSDD-50BR-E
Port Adapter size: 3/8" x 5/8"	<input type="checkbox"/> PAC-SG76RJ-E
Port Adapter size: 1/4" x 3/8"	<input type="checkbox"/> PAC-493PI
Port Adapter size: 3/8" X 1/2"	<input type="checkbox"/> MAC-A454JP-E
Port Adapter size: 1/2" X 3/8"	<input type="checkbox"/> MAC-A455JP-E
Port Adapter size: 1/2" X 5/8"	<input type="checkbox"/> MAC-A456JP-E
Branch Box	<input type="checkbox"/> PAC-MKA52BC
Branch Box	<input type="checkbox"/> PAC-MKA32BC
Branch Box Outer Cover	<input type="checkbox"/> BBE-1
Air Outlet Guide	<input type="checkbox"/> PAC-SH96SG-E (two pieces are required)
Front Wind Baffle	<input type="checkbox"/> WB-PA3 (two pieces are required)
Optional Defrost Heater	<input type="checkbox"/> PAC-SJ20BH-E
Centralized Drain Pan	<input type="checkbox"/> PAC-SH97DP-E
Refrigeration Ball Valve-Flare/Schrader/Insulated — 1/2" size	<input type="checkbox"/> BV12FFSI2
Refrigeration Ball Valve-Flare/Schrader/Insulated — 1/4" size	<input type="checkbox"/> BV14FFSI2
Refrigeration Ball Valve-Flare/Schrader/Insulated — 3/8" size	<input type="checkbox"/> BV38FFSI2
Refrigeration Ball Valve-Flare/Schrader/Insulated — 5/8" size	<input type="checkbox"/> BV58FFSI2
Hail Guard	<input type="checkbox"/> HG-A2
Outdoor Unit 3-1/4 inch Mounting Base (Pair) - Plastic	<input type="checkbox"/> DSD-400P
Condensing Unit Mounting Pad 16" x 36" x 3"	<input type="checkbox"/> ULTRILITE1
Outdoor Unit Stand — 12" High	<input type="checkbox"/> QSMS1202M
Outdoor Unit Stand — 18" High	<input type="checkbox"/> QSMS1802M
Outdoor Unit Stand — 24"High	<input type="checkbox"/> QSMS2402M
Heavy Duty Wall Mounting Bracket— Coated Steel	<input type="checkbox"/> QSWB2000M-1
Heavy Duty Wall Mounting Bracket — 316 Series Stainless Steel	<input type="checkbox"/> QSWBSS
10' x 3/8" x 10' x 5/8" Lineset (Twin-Tube Insulation)	<input type="checkbox"/> MPLS385812T-10
15' x 3/8" x 15' x 5/8" Lineset (Twin-Tube Insulation)	<input type="checkbox"/> MPLS385812T-15
30' x 3/8" x 30' x 5/8" Lineset (Twin-Tube Insulation)	<input type="checkbox"/> MPLS385812T-30
50' x 3/8" x 50' x 5/8" Lineset (Twin-Tube Insulation)	<input type="checkbox"/> MPLS385812T-50
65' x 3/8" x 65' x 5/8" Lineset (Twin-Tube Insulation)	<input type="checkbox"/> MPLS385812T-65
100' x 3/8" x 100' x 5/8" Lineset (Twin-Tube Insulation)	<input type="checkbox"/> MPLS385812T-100

SYSTEM DESIGN: MXZ-8C48NA2

Outdoor unit		MXZ-4C36NAHZ2-U1	MXZ-5C42NAHZ2-U1	MXZ-8C48NAHZ2-U1 MXZ-8C48NA2-U1	MXZ-8C60NA2-U1					
		4HP		4.5HP		5HP		7HP		
		Rated capacity (kBtu/h)	Cooling	36	42	48	60			
			Heating	45	48	54	66			
		Refrigerant R410A								
Connectable indoor unit	Capacity class		Type 06 to Type 36							
			Caution: The indoor unit which rated capacity exceeds 36 kBtu/h (Type 36) can NOT be connected.							
	Number of units		2 ⁽¹⁾ to 4 units		2 ⁽¹⁾ to 5 units		2 ⁽¹⁾ to 8 units		2 ⁽¹⁾ to 8 units	
Total system capacity range		33 to 130% of outdoor unit capacity (12 to 46.8 kBtu/h)		29 to 130% of outdoor unit capacity (12 to 54.6 kBtu/h)		25 to 130% of outdoor unit capacity (12 to 62.4 kBtu/h)		20 to 130% of outdoor unit capacity (12 to 78 kBtu/h)		
Connectable branch box	Number of units		1 or 2 units							

Connectable indoor unit lineups (Heat pump inverter type)									
Model type	Model name	Capacity class [kBtu/h]							
		06	09	12	15	18	24	30	36
Deluxe Wall-mounted	MSZ-FH06/09/12/15NA, 18NA2	●	●	●	●	●			
Designer	MSZ-EF09/12/15/18NA(W/B/S)	●	●	●	●	●			
Standard Wall-mounted	MSZ-GL06/09/12/15/18/24NA	●	●	●	●	●	●		
Low static ducted ^{*3 *4}	SEZ-KD09/12/15/18NA		●	●	●	●			
P-series mid static ducted ^{*3 *4}	PEAD-A09/12/15/18/24/30/36AA7		●	●	●	●	●	●	●
1-way cassette	MLZ-KP09/12/18NA		●	●	●	●			
P-series 22*22 4-way cassette	SLZ-KF09/12/15NA		●	●	●				
P-series 33*33 4-way cassette	PLA-A12/18/24/30/36EA7 ^{*5}			●	●	●	●	●	●
Floor standing	MFZ-KJ09/12/15/18NA		●	●	●	●			
Standard Multi-position air handler ^{*2}	SVZ-KP12/18/24/30/36NA			●	●	●	●	●	●

Branch box	PAC-MKA52BC	PAC-MKA32BC
Number of branches (Indoor unit that can be connected)	5 branches (MAX. 5 units)	3 branches (MAX. 3 units)

Note: A maximum of 2 branch boxes can be connected to 1 outdoor unit.

2- branch pipe (joint): Optional parts								
In the case of using 1- branch box	No need							
In the case of using 2- branch boxes	<table border="1" style="width: 100%; border-collapse: collapse;"> <tr> <th style="text-align: left;">Model name</th> <th style="text-align: left;">Connection method</th> </tr> <tr> <td>MSDD-50AR-E</td> <td>flare</td> </tr> <tr> <td>MSDD-50BR-E</td> <td>brazing</td> </tr> </table>	Model name	Connection method	MSDD-50AR-E	flare	MSDD-50BR-E	brazing	Select a model according to the connection method.
Model name	Connection method							
MSDD-50AR-E	flare							
MSDD-50BR-E	brazing							

Option Optional accessories for indoor units and outdoor units are available.

^{*1} Only one unit connection is possible with ducted unit.

^{*2} When connecting a multi-position unit(s), set additional constraints as follows. For connections other than those specified below, consult your dealer.

● **Models other than MXZ-8C60NA2** (For each connected branch box)

Number of connecting multi-position unit	Constraints
2	Any indoor units other than ducted units are not connectable.
1	<ul style="list-style-type: none"> · The total system wide capacity should be 130% or below including the ducted unit. · Only 1 ducted unit can be included in the connection.

● **MXZ-8C60NA2** (For each connected branch box)

Number of connecting multi-position unit	Constraints
2	Any indoor units other than ducted unit are not connectable.
1	<ul style="list-style-type: none"> · The total system wide capacity should be 100% or below including the ducted unit. · Only 1 ducted unit can be included in the connection.

^{*3} For MXZ-8C60NA2: When connecting the SEZ and PEAD-series units, the total system wide capacity per 1 branch box should be 100% or below including the ducted units. (Only if connecting to branch box)

^{*4} When not outside units 60: A branch box can connect to maximum 3 of the ducted units. When connecting with 3 of the ducted units per 1 branch box, other indoor units cannot be connected.

When outside units 60: A branch box can connect to maximum 2 of the ducted units. When connecting with 1 and over 1 of the ducted units, the total ability including of the ducted units is 100% and below 100%.

^{*5} When the system includes 1 unit of ducted units, the number of the maximum connectable indoor units is decreased as follows:
3 for MXZ-4C36NAHZ2-U1, 4 for MXZ-5C42NAHZ2-U1, and 6 for MXZ-8C48NA(HZ)2-U1 and MXZ-8C60NA2-U1



NOTE

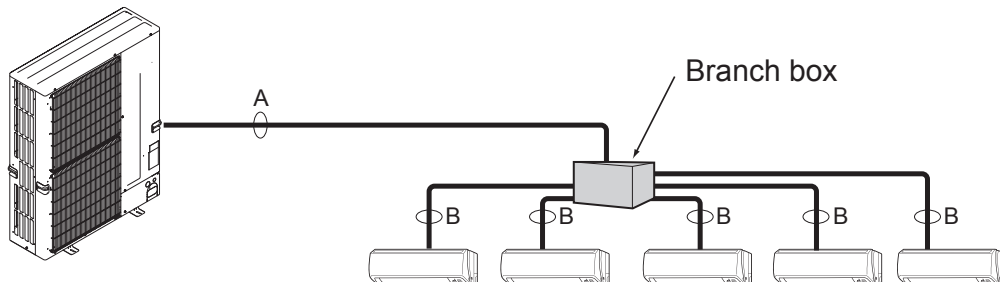
Please refer to Application Note 1039 for more information and exceptions to these rules.

Piping connection size

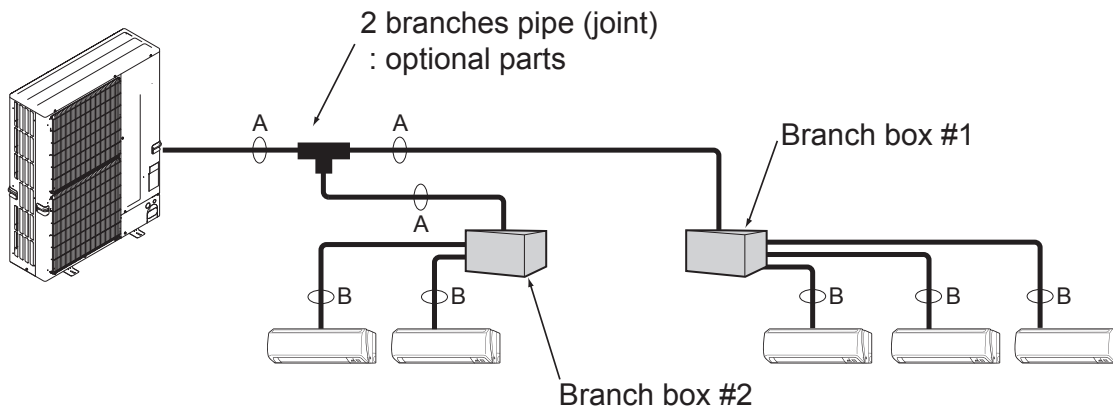
	A	B
Liquid	$\phi 3/8$ inch [9.52 mm]	The piping connection size differs according to the type and capacity of indoor units. Match the piping connection size of branch box with indoor unit. If the piping connection size of branch box does not match the piping connection size of indoor unit, use optional different-diameter (deformed) joints to the branch box side. (Connect deformed joint directly to the branch box side.)
Gas	$\phi 5/8$ inch / $\phi 3/4$ inch* [15.88 mm] / [19.05 mm]	

* MXZ-8C60 only

- In case of using 1-branch box
Flare connection employed (No brazing)

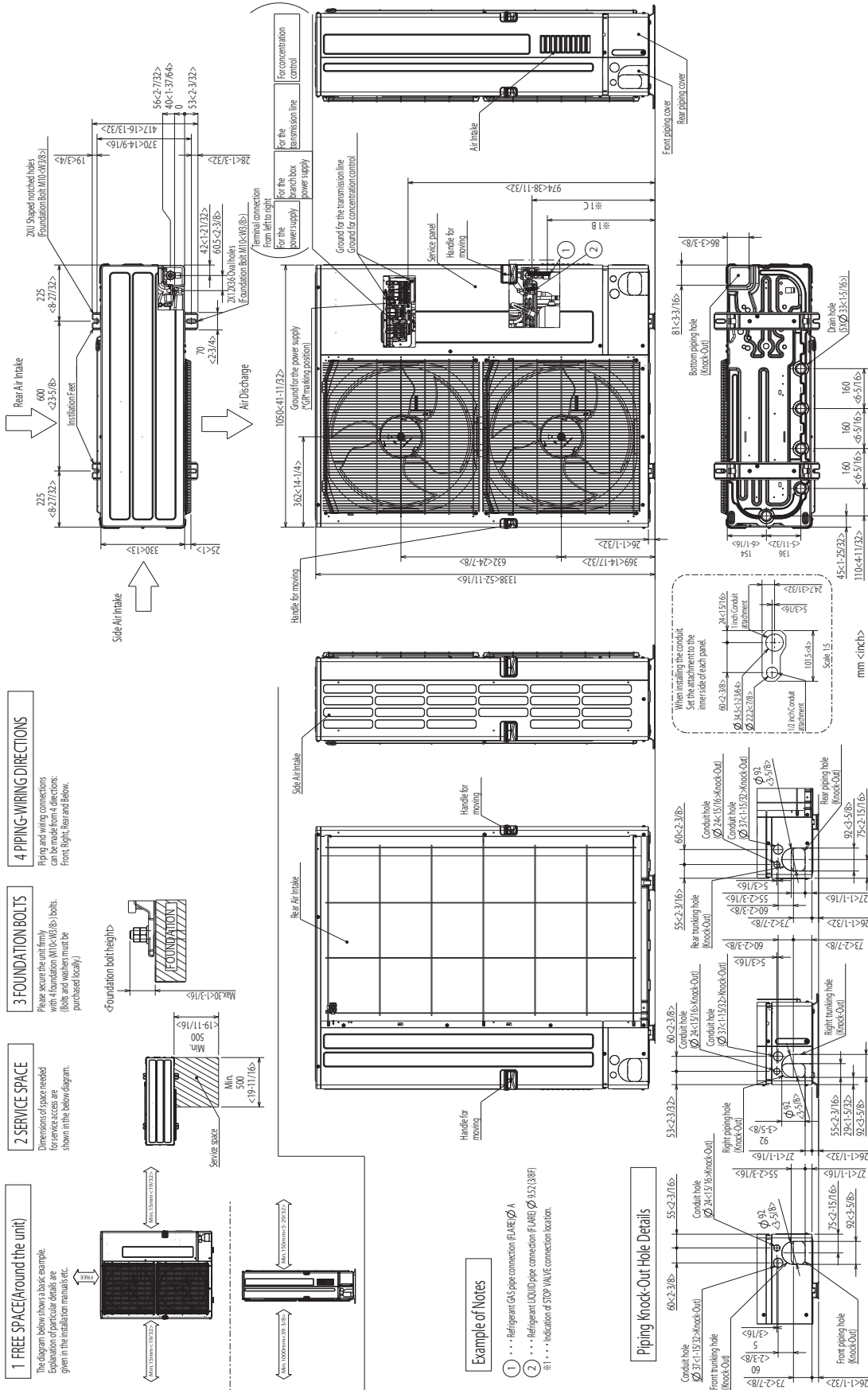


- In case of using 2-branch boxes



- Installation procedure (2 branches pipe (joint))
Refer to the installation manuals of MSDD-50AR-E and MSDD-50BR-E.

Unit: mm <inch>



DIMENSIONS: PAC-MKA52BC AND PAC-MKA32BC BRANCH BOXES

PAC-MKA52BC

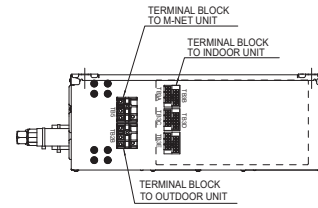
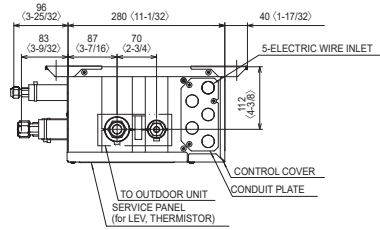
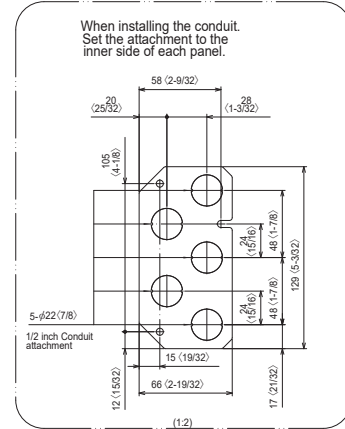
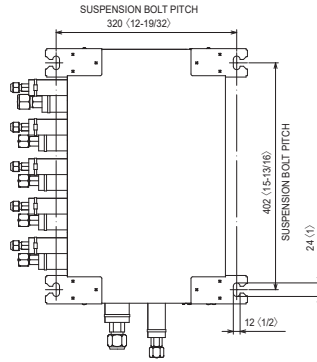
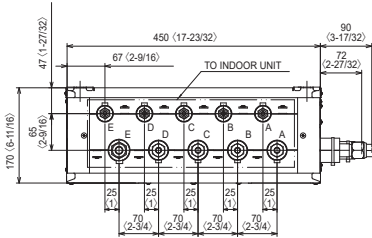
Unit: mm <inch>

SUSPENSION BOLT: W3/8(M10)

REFRIGERANT PIPE FLARED CONNECTION

Unit: inch

	A	B	C	D	E	TO OUTDOOR UNIT
LIQUID PIPE	1/4F	1/4F	1/4F	1/4F	1/4F	3/8F
GAS PIPE	3/8F	3/8F	3/8F	3/8F	1/2F	5/8F



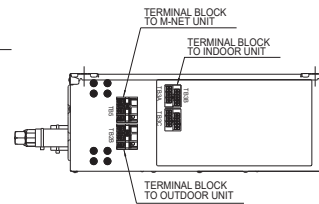
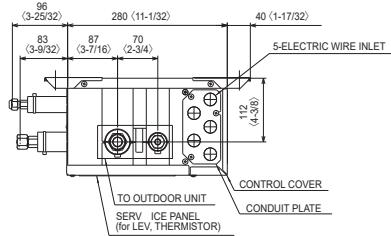
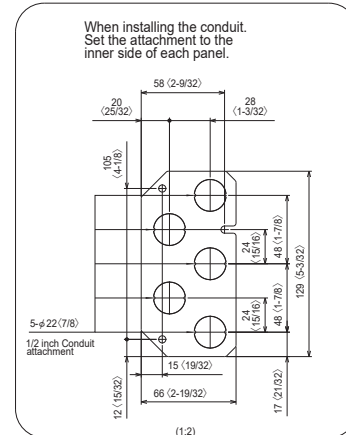
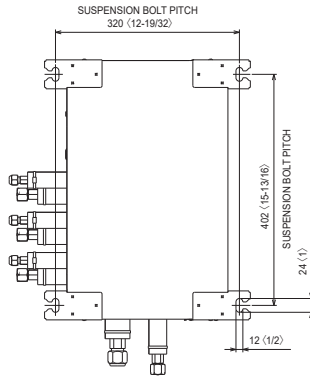
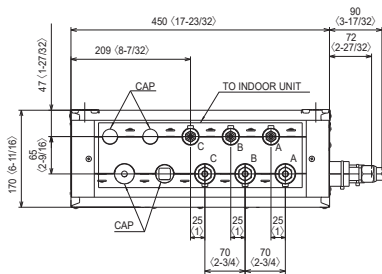
PAC-MKA32BC

SUSPENSION BOLT: W3/8(M10)

REFRIGERANT PIPE FLARED CONNECTION

Unit: inch

	A	B	C	TO OUTDOOR UNIT
LIQUID PIPE	1/4F	1/4F	1/4F	3/8F
GAS PIPE	3/8F	3/8F	3/8F	5/8F



1340 Satellite Boulevard, Suwanee, GA 30024
Toll Free: 800-433-4822 www.mehvac.com

FORM# MXZ-8C48NA2 - 202009

