

MXZ-SM36NAM2 3-TON MULTI-ZONE INVERTER HEAT-PUMP SYSTEM



Job Name:

System Reference:

Date:



FEATURES

- Compatible with M- and P-Series and CITY MULTI® indoor units. Branch box required for connection with M- and P-Series
- Variable speed INVERTER-driven compressor
- Seacoast protection on heat exchanger and base panel (rated for 2,000 hrs in accordance with ASTM B117 testing)
- Thermal Differential 1°F (with PAC-MKA32/52BC only)
- Optional base pan heater
- Quiet outdoor unit operation, rated sound pressure as low as 49 dB(A)
- High pressure protection
- Compressor thermal protection
- Compressor overcurrent detection
- Fan motor overheating/voltage protection

ENERGY STAR products are third-party certified by an EPA-recognized Certification Body.

Specifications are subject to change without notice.

© 2023 Mitsubishi Electric Trane HVAC US LLC. All rights reserved.

SPECIFICATIONS: MXZ-SM36NAM2

Outdoor unit	Airflow Rate (Cooling / Heating)	CFM	3,885 / 3,885	
	Refrigerant Control		LEV	
	Defrost Method		Reverse Cycle	
	Heat Exchanger Type		Plate fin coil	
	Heat Exchanger Coating		Blue Fin Coating	
	Sound Pressure Level, Cooling ¹	dB(A)	49	
	Sound Pressure Level, Heating ²	dB(A)	53	
	Compressor Type		Hermetic	
	Compressor Model		ANB33FNHMT	
	Compressor Motor Output	kW	2.8	
	Compressor Rated Load Amps	A	19	
	Compressor Locked Rotor Amps	A	22.0	
	Compressor Oil Type // Charge	oz.	FV50S // 78	
	Base Pan Heater		Optional (PAC-SJ20BH-E)	
	Unit Dimensions	W: In. [mm]		41-11/32 [1,050]
		D: In. [mm]		13 [330]
		H: In. [mm]		52-11/16 [1,338]
	Package Dimensions	W: In. [mm]		43 [1,090]
		D: In. [mm]		18 [450]
		H: In. [mm]		57 [1,430]
Unit Weight	Lbs.[kg]		271 [123]	
Package Weight	Lbs.[kg]		295 [134]	
Outdoor unit operating temperature range	Cooling Intake Air Temp (Maximum / Minimum) ³	°FDB	115 / 5 ^c	
	Cooling Thermal Lock-out / Re-start Temperatures	°FDB	N/A / N/A	
	Heating Intake Air Temp (Maximum / Minimum)	°FDB	59 / -13	
	Heating Thermal Lock-out / Re-start Temperatures	°FDB	-24 / -14	
Refrigerant	Pre-Charged Refrigerant Amount	Lbs, oz	10.0, 9.0	
Indoor unit connection	Maximum Number of Connected IDU with Branch Box		4 (3) ^A	
	Maximum Number of Connected IDU without Branch Box		11	
	Minimum Connected Capacity with Branch Box		12,000	
	Minimum Connected Capacity without Branch Box		18,000	
	Maximum connected capacity		46,800	
Piping	Liquid Pipe Size O.D. (Flared)	In.[mm]	3/8 [9.52]	
	Gas Pipe Size O.D. (Flared)	In.[mm]	5/8 [15.88]	
	Total Piping Length when using Branch Box	Ft. [m]	492 [150]	
	Total Piping Length without Branch Box	Ft. [m]	984 [300]	
	Maximum Height Difference ^B , ODU above IDU	Ft. [m]	164 [50]	
	Maximum Height Difference ^B , ODU below IDU	Ft. [m]	131 [40]	
	Maximum Height Difference ^B , between branch boxes	Ft. [m]	49 [15]	
	Maximum Height Difference between IDU and IDU without branch box	Ft. [m]	49 [15]	
		Ft. [m]	49 [15]	
	Maximum Piping Length between ODU and Branch Box	Ft. [m]	180 [55]	
	Farthest Piping Length from ODU to IDU with Branch Box	Ft. [m]	262 [80]	
	Farthest Piping Length from ODU to IDU without Branch Box	Ft. [m]	492 [150]	
	Farthest Piping Length after Branch Box	Ft. [m]	82 [25]	
	Total Piping Length between Branch Boxes and IDU	Ft. [m]	311 [95]	
Maximum Number of Bends for IDU		15		

NOTES:

AHRI Rated Conditions ¹Cooling (Indoor // Outdoor) °F 80 DB, 67 WB // 95 DB, 75 WB
 (Rated data is determined at a fixed compressor speed) ²Heating at 47°F (Indoor // Outdoor) °F 70 DB, 60 WB // 47 DB, 43 WB
³Heating at 17°F (Indoor // Outdoor) °F 70 DB, 60 WB // 17 DB, 15 WB

Conditions ⁴Heating at 5°F (Indoor // Outdoor) °F 70 DB, 60 WB // 5 DB, 4 WB

¹Applications should be restricted to comfort cooling only; equipment cooling applications are not recommended for low ambient temperature conditions.

^A when 1 or more PLA-A-EA7 connected

^B Branch box should be placed within the level between the outdoor unit and indoor units

^C 5°F DB - 115°F DB when optional wind baffles are installed

For actual capacity performance based on indoor unit type and number of indoor units connected, please refer to MXZ Operational Performance.

Although the maximum connectable capacity is 130%, the outdoor unit cannot provide more than 100% of the rated capacity. Please utilize this over capacity capability for load shedding or applications where it is known that all connected units will NOT be operating at the same time.

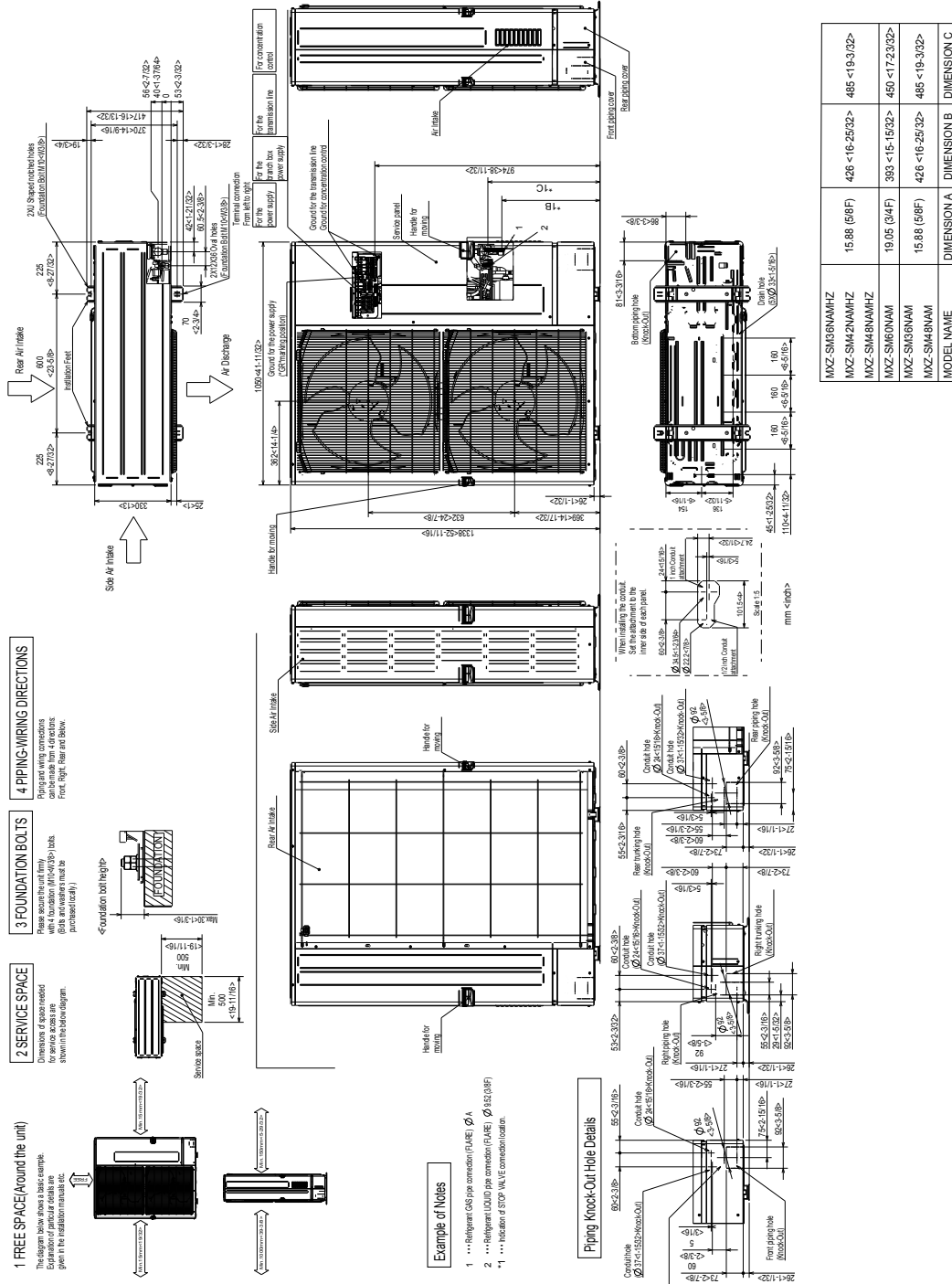
Mid and high external static pressure tests conducted at 0.3 and 0.5 in.w.g. respectively, according to AHRI 210/240. The external static pressures utilized have no bearing on the capabilities of the indoor unit; please refer to the indoor unit manual to select the correct external static pressure setting for the application.

OUTDOOR UNIT ACCESSORIES: MXZ-SM36NAM2

Air Deflector	Vertical Air Deflector	ADV-1
Air Outlet Guide	Air Outlet Guide (1 Piece)	PAC-SH96SG-E
Ball Valve	Refrigeration Ball Valve - 1/2"	BV12FFSI2
	Refrigeration Ball Valve - 1/4"	BV14FFSI2
	Refrigeration Ball Valve - 3/8"	BV38FFSI2
	Refrigeration Ball Valve - 5/8"	BV58FFSI2
Branch Box	3 Port Branch Box	PAC-MKA32BC
	5 Port Branch Box	PAC-MKA52BC
	Branch Box Enclosure	BBE-1
Centralized Drain Pan	Central Drain Pan	PAC-SH97DP-E
Control Wire	M-Net Control Wire, 1,000' Roll (16-AWG, Standard, Twisted Pair, Shielded, Jacketed- Plenum rated)	CW162S-1000
	M-Net Control Wire, 250' Roll (16-AWG, Standard, Twisted Pair, Shielded, Jacketed- Plenum rated)	CW162S-250
Control/Service Tool	Maintenance Tool Interface	PAC-USCMS-MN-1
Distribution pipe	Brazed Connection	MSDD-50BR-E
	Flare Connection	MSDD-50AR-E
Drain Socket	Drain Socket	PAC-SG60DS-E
Hail Guards	Hail Guard	HG-A2
Mini-Split Wire	14 Gauge, 4 wire MiniSplit Cable—250 ft. roll	S144-250
	14 Gauge, 4 wire MiniSplit Cable—250 ft. roll	SW144-250
	14 Gauge, 4 wire MiniSplit Cable—50 ft. roll	S144-50
	14 Gauge, 4 wire MiniSplit Cable—50 ft. roll	SW144-50
	16 Gauge, 4 wire MiniSplit Cable—250 ft. roll	S164-250
	16 Gauge, 4 wire MiniSplit Cable—250 ft. roll	SW164-250
	16 Gauge, 4 wire MiniSplit Cable—50 ft. roll	S164-50
	16 Gauge, 4 wire MiniSplit Cable—50 ft. roll	SW164-50
Mounting Pad	Condensing Unit Mounting Pad: 24" x 42" x 3"	ULTRILITE2
	Outdoor Unit 3-1/4 inch Mounting Base (Pair) - Plastic	DSD-400P
Optional Defrost Heater	Optional Defrost Heater	PAC-SJ20BH-E
Port Adaptor	Adaptor: 1/2" x 3/8"	MAC-A455JP-E
	Adaptor: 1/2" x 5/8"	MAC-A456JP-E
	Adaptor: 1/4" x 3/8"	PAC-493PI
	Adaptor: 3/8" x 1/2"	MAC-A454JP-E
	Adaptor: 3/8" x 5/8"	PAC-SG76RJ-E
Stand	18" Dual Fan Stand	QSMS1802M
	24" Dual Fan Stand	QSMS2402M
	Condenser Wall Bracket	QSWB2000M-1
	Condenser Wall Bracket - Stainless Steel Finish	QSWBSS
	Outdoor Unit Stand — 12" High	QSMS1202M
Wind Baffle	Front Wind Baffle	WB-PA3 (two pieces are required)

OUTDOOR UNIT DIMENSIONS: MXZ-SM36NAM2

Unit: mm
<inch>



MODEL NAME	DIMENSION A	DIMENSION B	DIMENSION C
MXZ-SM36NAMHZ	15.88 (618F)	426 <16-25/32>	486 <19-3/32>
MXZ-SM42NAMHZ	15.88 (618F)	426 <16-25/32>	486 <19-3/32>
MXZ-SM48NAMHZ	19.05 (747F)	383 <15-15/32>	450 <17-23/32>
MXZ-SM63NAM	15.88 (618F)	426 <16-25/32>	486 <19-3/32>
MXZ-SM81NAM	15.88 (618F)	426 <16-25/32>	486 <19-3/32>

1340 Satellite Boulevard Suwanee, GA 30024
Toll Free: 800-433-4822 www.mehvac.com



FORM# MXZ-SM36NAM2 - 202310