

**PLA-A36EA7 & PUZ-HA36NKA**  
**36,000 BTU/H 3' X 3' CEILING CASSETTE**  
**36,000 BTU/H HYPER-HEATING UNIVERSAL OUTDOOR**



Job Name:

System Reference:

Date:



Indoor Unit.....PLA-A36EA7

Outdoor Unit.....PUZ-HA36NKA

**INDOOR UNIT FEATURES**

- Space-efficient ductless installation
- Equipped with 3D i-see Sensor® for enhanced comfort and energy efficiency
- Airflow settings for high and low ceiling applications
- Individual vane settings for direct/indirect airflow control or variable airflow patterns
- Knockouts for outside-air intake and branch-duct run
- Filter indicator signal
- Easy-to-clean, washable filter (optional high-efficiency filter available - requires multi-function casement)
- Built-in condensate lift mechanism
- Ideal for retail shops, classrooms, office spaces, conference centers, building lobbies, and more
- Multiple control options available:
  - kumo cloud® smart device app for remote access
  - Third-party interface options
  - Wired or wireless controllers

**OUTDOOR UNIT FEATURES**

- Variable speed INVERTER-driven compressor
- High heating capacity: flash injection circuit maintains 100% heating capacity at 5°F outdoor temperature
- Wide heating range: heating performance down to -13°F (average of 80% heating capacity)
- High speed heating at start up: Hyper-Heating INVERTER® reduces the time for heating at start up by about half compared to standard models
- Suction accumulator pre-charged with refrigerant volume for piping length up to 100 ft.
- High pressure/temperature protection
- Built-in base pan heater
- Flash injection circuit provides efficient high heating capacities at low ambient temperatures

# SPECIFICATIONS: PLA-A36EA7 & PUZ-HA36NKA

|   |  |                     |   |
|---|--|---------------------|---|
| Cooling at 95°F <sup>1</sup>            | Maximum Capacity                             | BTU/H               | 36,000  |
|   | Rated Capacity                               | BTU/H               | 36,000  |
|   | Minimum Capacity                             | BTU/H               | 14,800  |
|   | Maximum Power Input                          | W                   | 2,750   |
|   | Rated Power Input                            | W                   | 2,750   |
|   | Moisture Removal                             | Pints/h             | 5.5   |
|   | Sensible Heat Factor                         |                     | 0.83  |
| Heating at 47°F <sup>2</sup>            | Maximum Capacity                             | BTU/H               | 40,000  |
|   | Rated Capacity                               | BTU/H               | 38,000  |
|   | Minimum Capacity                             | BTU/H               | 16,700  |
|   | Maximum Power Input                          | W                   | 2,880   |
|   | Rated Power Input                            | W                   | 2,650   |
|   | Power Factor [208V / 230V]                   | %                   | 98.0 / 98.0   |
| Heating at 17°F <sup>3</sup>            | Maximum Capacity                             | BTU/H               | 38,000  |
|   | Rated Capacity                               | BTU/H               | 24,200  |
|   | Maximum Power Input                          | W                   | 4,785   |
|   | Rated Power Input                            | W                   | 2,715   |
| Heating at 5°F <sup>4</sup>             | Maximum Capacity                             | BTU/H               | 38,000  |
| Heating at -13°F <sup>7</sup>           | Maximum Capacity                             | BTU/H               | 30,400  |
| Efficiency                              | SEER <sup>2</sup>                            |                     | 20.0  |
|   | EER <sup>2</sup> <sup>1</sup>                |                     | 13.0  |
|   | HSPF <sup>2</sup> [IV]                       |                     | 9.0   |
|   | COP at 47°F <sup>2</sup>                     |                     | 4.2   |
|   | COP at 17°F at Maximum Capacity <sup>3</sup> |                     | 2.3   |
|   | COP at 5°F at Maximum Capacity <sup>4</sup>  |                     | 2.0   |
| Electrical                              | Voltage, Phase, Frequency                    |                     | 208/230, 1, 60  |
|   | Guaranteed Voltage Range                     | V AC                | 198 - 253   |
|   | Voltage: Indoor - Outdoor, S1-S2             | V AC                | 208/230   |
|   | Voltage: Indoor - Outdoor, S2-S3             | V DC                | 24  |
|   | Short-circuit Current Rating [SCCR]          | kA                  | 5   |
|   | Recommended Fuse/Breaker Size (Outdoor)      | A                   | 35  |
|   | Recommended Wire Size [Indoor - Outdoor]     | AWG                 | 14  |
|   | Power Supply                                 |                     | Indoor unit is powered by the outdoor unit  |
|   | MCA  | A                   | 2.0   |
| Indoor Unit                             | Fan Motor Full Load Amperage                 | A                   | 0.95  |
|   | Fan Motor Type                               |                     | DC Motor  |
|   | Airflow Rate at Cooling, Dry                 | CFM                 | 670-850-1,020-1,200   |
|   | Airflow Rate at Cooling, Wet                 | CFM                 | 630-810-980-1,160   |
|   | Airflow Rate at Heating, Dry                 | CFM                 | 670-850-1,020-1,200   |
|   | Sound Pressure Level [Cooling]               | dB[A]               | 32-37-41-44   |
|   | Sound Pressure Level [Heating]               | dB[A]               | 32-37-41-44   |
|   | Drain Pipe Size                              | In. [mm]            | 1-1/4 [32]  |
|   | Condensate Lift Mechanism, Maximum Distance  | In. [mm]            | 33-7/16 [849]   |
|   | Coating on Heat Exchanger                    |                     | —   |
|   | External Finish Color                        |                     | White Munsell 6.4Y 8.9/0.4  |
|   | Unit Dimensions                              | W x D x H: In. [mm] | 33-1/16 // 37-13/32 x 33-1/16 // 37-13/32 x 11-3/4 // 1-9/16 [840 // 950 x 840 // 950 x 298 // 40]    |
|   | Package Dimensions                           | W x D x H: In. [mm] | 35-9/16 // 39-6/16 x 34-5/16 // 38-3/16 x 16-9/16 // 4-12/16 [903 // 1,000 x 871 // 970 x 421 // 121] |
| Unit Weight                             | Lbs. [kg]                                    | 56 // 11 [25 // 5]  |   |
| Package Weight                          | Lbs. [kg]                                    | 77 [35]             |   |
| Indoor Unit Operating Temperature Range | Cooling Intake Air Temp [Maximum / Minimum]* | °F                  | 90 DB, 72 WB / 66 DB, 61 WB   |
|   | Heating Intake Air Temp [Maximum / Minimum]  | °F                  | 77 DB / 59 DB   |

**NOTES:**

AHRI Rated Conditions

(Rated data is determined at a fixed compressor speed)

<sup>1</sup>Cooling (Indoor // Outdoor)

<sup>2</sup>Heating at 47°F (Indoor // Outdoor)

<sup>3</sup>Heating at 17°F (Indoor // Outdoor)

°F 80 DB, 67 WB // 95 DB, 75 WB

°F 70 DB, 60 WB // 47 DB, 43 WB

°F 70 DB, 60 WB // 17 DB, 15 WB

Conditions

<sup>4</sup>Heating at 5°F (Indoor // Outdoor)

<sup>7</sup>Heating at -13°F (Indoor // Outdoor)

°F 70 DB, 60 WB // 5 DB, 4 WB

°F 70 DB, 60 WB // -13 DB, -14 WB

\* Indoor/Outdoor Unit Operating Temperature Range (Cooling Air Temp [Maximum / Minimum]):

• Wind baffles required to operate below 23°F DB in cooling mode.

• Refer to wind baffle documentation for further information.

\*\*Outdoor Unit Operating Temperature Range (Cooling Thermal Lock-out / Re-start Temperatures; Heating Thermal Lock-out / Re-start Temperatures):

• System cuts out in heating mode to avoid thermistor error and automatically restarts at these temperatures.

# SPECIFICATIONS: PLA-A36EA7 & PUZ-HA36NKA

|  |  |                     |  |
|--|--|---------------------|--|
| Outdoor Unit                             | MCA  | A                   | 24.0   |
|  | MOCP   | A                   | 42   |
|  | Fan Motor Output   | W                   | 74   |
|  | Airflow Rate [Cooling / Heating]                           | CFM                 | 3880 / 3880                                      |
|  | Refrigerant Control  |                     | LEV  |
|  | Defrost Method   |                     | Reverse Cycle                                    |
|  | Sound Pressure Level, Cooling <sup>1</sup>                 | dB(A)               | 52   |
|  | Sound Pressure Level, Heating <sup>2</sup>                 | dB(A)               | 53   |
|  | Compressor Type  |                     | Scroll   |
|  | Compressor Model   |                     | ANB33FJMMT                                       |
|  | Compressor Rated Load Amps                                 | A                   | 18   |
|  | Compressor Locked Rotor Amps                               | A                   | 27.5   |
|  | Compressor Oil [Type // Charge]                            | oz.                 | FV50S // 1.4,47                                  |
|  | External Finish Color                                      |                     | Ivory Munsell 3Y 7.8/1.1                         |
|  | Base Pan Heater  |                     | Built-in   |
|  | Unit Dimensions  | W x D x H: In. [mm] | 41-5/16 x 14-3/16 x 52-11/16 [1050 x 360 x 1338] |
|  | Package Dimensions   | W x D x H: In. [mm] | 43 x 18 x 57 [1110 x 480 x 1440]                 |
| Unit Weight                              | Lbs. [kg]  | 261 [118]           |  |
| Package Weight                           | Lbs. [kg]  | 285 [129]           |  |
| Outdoor Unit Operating Temperature Range | Cooling Air Temp [Maximum / Minimum]*                      | °F                  | 115 DB / 0 DB                                    |
|  | Heating Air Temp [Maximum / Minimum]                       | °F                  | 70 DB, 59 WB / -13 DB, -13 WB                    |
|  | Heating Thermal Lock-out / Re-start Temperatures**         | °F                  | -22 / -13  |
| Refrigerant                              | Type   |                     | R410A  |
|  | Pre-Charged Refrigerant Amount                             | Lbs, oz             | 11.0, 7.0  |
|  | Maximum Pre-Charged Piping Length                          | Ft. [m]             | 100.0 [30.0]                                     |
|  | Additional Refrigerant Charge Per Additional Piping Length | oz./Ft. [g/m]       | .7 [56]  |
| Piping                                   | Gas Pipe Size O.D. [Flared]                                | In.[mm]             | 5/8 [15.88]                                      |
|  | Liquid Pipe Size O.D. [Flared]                             | In.[mm]             | 3/8 [9.52]                                       |
|  | Maximum Piping Length                                      | Ft. [m]             | 245 [75]   |
|  | Maximum Height Difference                                  | Ft. [m]             | 100 [30]   |
|  | Maximum Number of Bends                                    |                     | 15   |

**NOTES:**

AHRI Rated Conditions

(Rated data is determined at a fixed compressor speed)

<sup>1</sup>Cooling (Indoor // Outdoor) °F 80 DB, 67 WB // 95 DB, 75 WB

<sup>2</sup>Heating at 47°F (Indoor // Outdoor) °F 70 DB, 60 WB // 47 DB, 43 WB

<sup>3</sup>Heating at 17°F (Indoor // Outdoor) °F 70 DB, 60 WB // 17 DB, 15 WB

Conditions

<sup>4</sup>Heating at 5°F (Indoor // Outdoor) °F 70 DB, 60 WB // 5 DB, 4 WB

<sup>7</sup>Heating at -13°F (Indoor // Outdoor) °F 70 DB, 60 WB // -13 DB, -14 WB

\* Indoor/Outdoor Unit Operating Temperature Range (Cooling Air Temp [Maximum / Minimum]):

- Wind baffles required to operate below 23°F DB in cooling mode.
- Refer to wind baffle documentation for further information.

\*\*Outdoor Unit Operating Temperature Range (Cooling Thermal Lock-out / Re-start Temperatures; Heating Thermal Lock-out / Re-start Temperatures):

- System cuts out in heating mode to avoid thermistor error and automatically restarts at these temperatures.

## INDOOR UNIT ACCESSORIES: PLA-A36EA7

|                                    |   |                   |
|------------------------------------|---|-------------------|
| Control Interface                  | 3-Pin Connector   | PAC-715AD         |
|                                    | Airzone ZBS Wired Blueface Principal Controller White                                       | AZZBSBLUEFACECB   |
|                                    | Airzone ZBS Wired Blueface Principal Controller White                                       | AZZBSBLUEZEROCB   |
|                                    | Airzone ZBS Wired Lite Controller White   | AZZBSLITECB       |
|                                    | Airzone ZBS Wireless Lite Controller White  | AZZBSLITERB       |
|                                    | Airzone ZBS Wireless Think Controller White   | AZZBSTHINKRB      |
|                                    | CN24 Relay Kit  | CN24RELAY-KIT-CM3 |
|                                    | IT Extender   | PAC-WHS01IE-E     |
|                                    | kumo station® for kumo cloud®   | PAC-WHS01HC-E     |
|                                    | Procon BACnet® and Modbus® Interface  | PAC-UKPRC001-CN-1 |
|                                    | Remote Operation Adapter†   | PAC-SF40RM-E      |
|                                    | Thermostat Interface  | PAC-US444CN-1     |
|                                    | Thermostat Interface  | PAC-US445CN-1     |
|                                    | USNAP Adapter   | PAC-WHS01UP-E     |
| Wireless Interface for kumo cloud® | PAC-USWHS002-WF-2   |                   |
| Remote Sensor                      | Flush Mount Remote Temperature Sensor   | PAC-USSEN002-FM-1 |
|                                    | Flush Mount Temperature Sensor  | PAC-USSEN001-FM-1 |
|                                    | Remote Temperature Sensor   | PAC-SE41TS-E      |
|                                    | Wireless temperature and humidity sensor for kumo cloud®                                    | PAC-USWHS003-TH-1 |
| Wired Remote Controller            | Deluxe Wired MA Remote Controller†  | PAR-40MAAU        |
|                                    | Simple Ductless Wired Remote Controller   | PAC-SDW01RC-1     |
|                                    | Simple MA Remote Controller†  | PAC-YT53CRAU-J    |
|                                    | Touch MA Controller†  | PAR-CT01MAU-SB    |
| Wireless Remote Controller         | kumo touch™ RedLINK™ Wireless Controller  | MHK2              |
|                                    | Lockdown bracket for remote controller  | RCMKP1CB          |
|                                    | Wireless MA Receiver  | PAR-FA32MA-W      |
|                                    | Wireless MA Remote Controller   | PAR-FL32MA-E      |
|                                    | Wireless Remote Controller  | PAR-SL101A-E      |
|                                    | Wireless Signal Receiver Panel  | PAR-SR4LU-E       |
| Casement                           | Multi-function Casement   | PAC-SJ41TM-E      |
| Condensate                         | Blue Diamond (Advanced) Mini Condensate Pump w/ Reservoir & Sensor (208/230V) [recommended] | X87-721           |
|                                    | Blue Diamond (MegaBlue Advanced) Condensate Pump w/ Reservoir & Sensor                      | X87-835           |
|                                    | Blue Diamond Sensor Extension Cable — 15 Ft.  | C13-103           |
|                                    | Refoco Condensate Pump (100-240 VAC) up to 120,000 BTU/H                                    | COMBI             |
| Disconnect Switch                  | (30A/600V/UL) [fits 2" X 4" utility box] - Black  | TAZ-MS303         |
|                                    | (30A/600V/UL) [fits 2" X 4" utility box] - White  | TAZ-MS303W        |
| Filter                             | High Efficiency Filter Element**  | PAC-SH59KF-E      |
| i-see Sensor® Panel                | Grille with 3D i-see Sensor® (required)   | PLP-41EAEU        |
| Lineset                            | 10' x 3/8" x 10' x 5/8" Lineset (Twin-Tube Insulation)                                      | MPLS385812T-10    |
|                                    | 100' x 3/8" x 100' x 5/8" Lineset (Twin-Tube Insulation)                                    | MPLS385812T-100   |
|                                    | 15' x 3/8" x 15' x 5/8" Lineset (Twin-Tube Insulation)                                      | MPLS385812T-15    |
|                                    | 30' x 3/8" x 30' x 5/8" Lineset (Twin-Tube Insulation)                                      | MPLS385812T-30    |
|                                    | 50' x 3/8" x 50' x 5/8" Lineset (Twin-Tube Insulation)                                      | MPLS385812T-50    |
|                                    | 65' x 3/8" x 65' x 5/8" Lineset (Twin-Tube Insulation)                                      | MPLS385812T-65    |
| Shutter Plate                      | Shutter Plate   | PAC-SJ37SP-E      |
| Space Panel                        | Space Panel   | PAC-SJ38AS-E      |

**NOTES:**

†PAC-SF40RM-E (Unable to use with wireless remote controller)

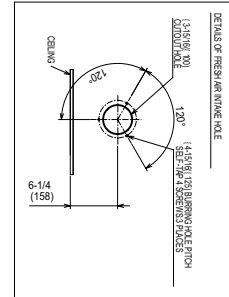
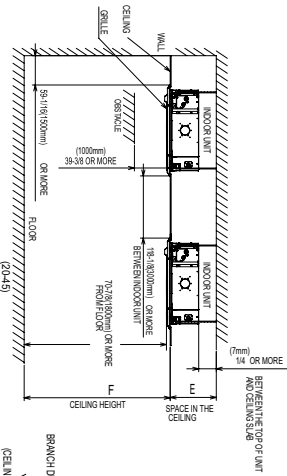
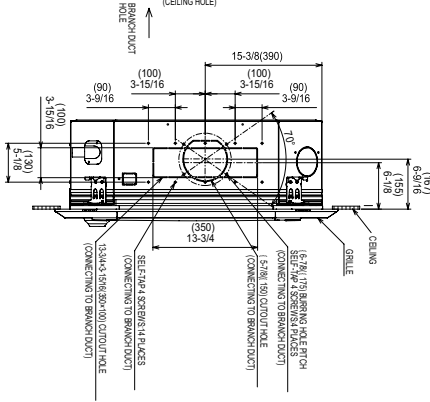
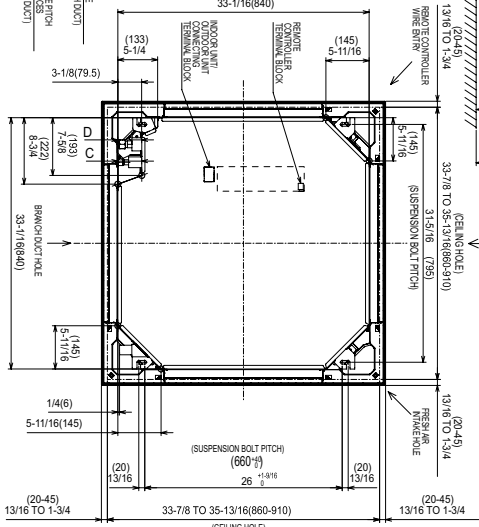
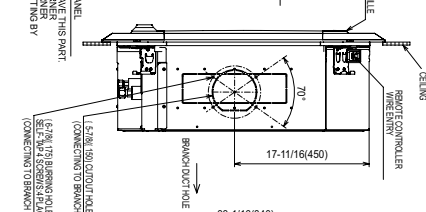
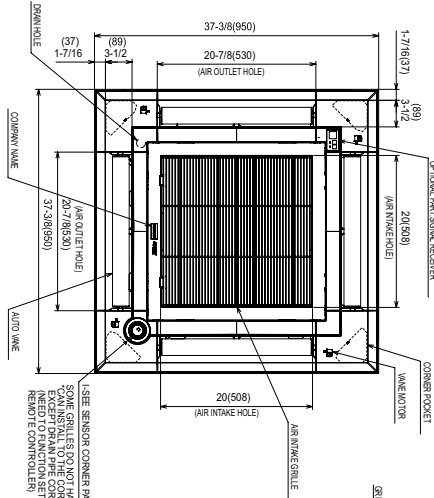
## OUTDOOR UNIT ACCESSORIES: PUZ-HA36NKA

|                         |   |  |
|-------------------------|---|--|
| Air Outlet Guide        | Air Outlet Guide (1 Piece)                      | PAC-SH96SG-E (two pieces are required) |
| Centralized Drain Pan   | Central Drain Pan                               | PAC-SH97DP-E                           |
| Control/Service Tool    | Control/Service Tool                            | PAC-SK52ST                             |
| Hail Guards             | Hail Guard                                      | HG-A2                                  |
| M-NET Converter         | M-NET Converter                                 | PAC-SJ85MA-E                           |
|                         | M-NET Converter                                 | PAC-SJ95MA-E                           |
| Mounting Pad            | Condensing Unit Mounting Pad: 24" x 42" x 3"    | ULTRILITE2                             |
| Optional Defrost Heater | Optional Defrost Heater                         | PAC-SJ20BH-E                           |
| Stand                   | 18" Dual Fan Stand                              | QSMS1802M                              |
|                         | 24" Dual Fan Stand                              | QSMS2402M                              |
|                         | Condenser Wall Bracket                          | QSWB2000M-1                            |
|                         | Condenser Wall Bracket - Stainless Steel Finish | QSWBSS                                 |
|                         | Outdoor Unit Stand — 12" High                   | QSMS1202M                              |
| Wind Baffle             | Front Wind Baffle                               | WB-PA3 (two pieces are required)       |

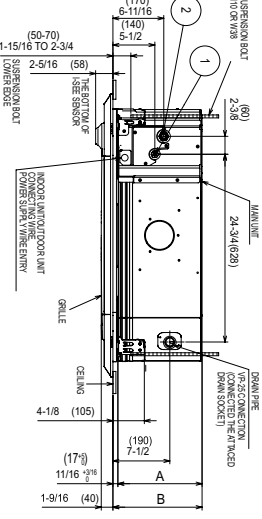
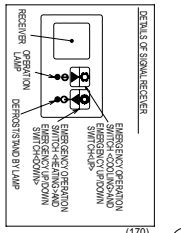
# INDOOR UNIT DIMENSIONS: PLA-A36EA7

Unit: inch (mm)

1. CHECK THE GRILLE LOCATION AND THE DESIGNATED GRILLES.
2. REINFORCE THE SUSPENSION BOLT FOR EARTHQUAKE RESISTANCE AS NEEDED.
3. PREPARED AT THE LOCAL SITE.
4. FOR DRAIN PIPE, USE VP-2910, H-1411 (20" PVC TUBE).
5. DRAIN PIPE MUST BE CONNECTED TO THE CEILING.
6. DRAIN PIPE MUST BE REMOVED FOR THE SERVICE PURPOSE.
7. ELECTRICAL BOX MAY BE REMOVED FOR THE SERVICE PURPOSE.
8. CONTROL POWER WIRES CONNECTION.
9. THE HEIGHT OF THE INDOOR UNIT IS ABLE TO BE ADJUSTED.
10. WHEN INSTALLING THE BRANCH DUCTS, BE SURE TO INSULATE ADEQUATELY.
11. IF BECOMES THE CAUSE OF DROPLET OR DRIP (DIPPING).
12. 9.5" FOR NECESSARY INSTALLATION SERVICE SPACE. PLEASE REFER TO THE OPTION FOR NECESSARY INSTALLATION SERVICE SPACE.
13. FOR THE INSTALLATION OF THE OPTIONAL HIGH EFFICIENCY FILTER OR MULTIFUNCTIONAL CASEMENT, REFER TO SPECIAL DRAWING.

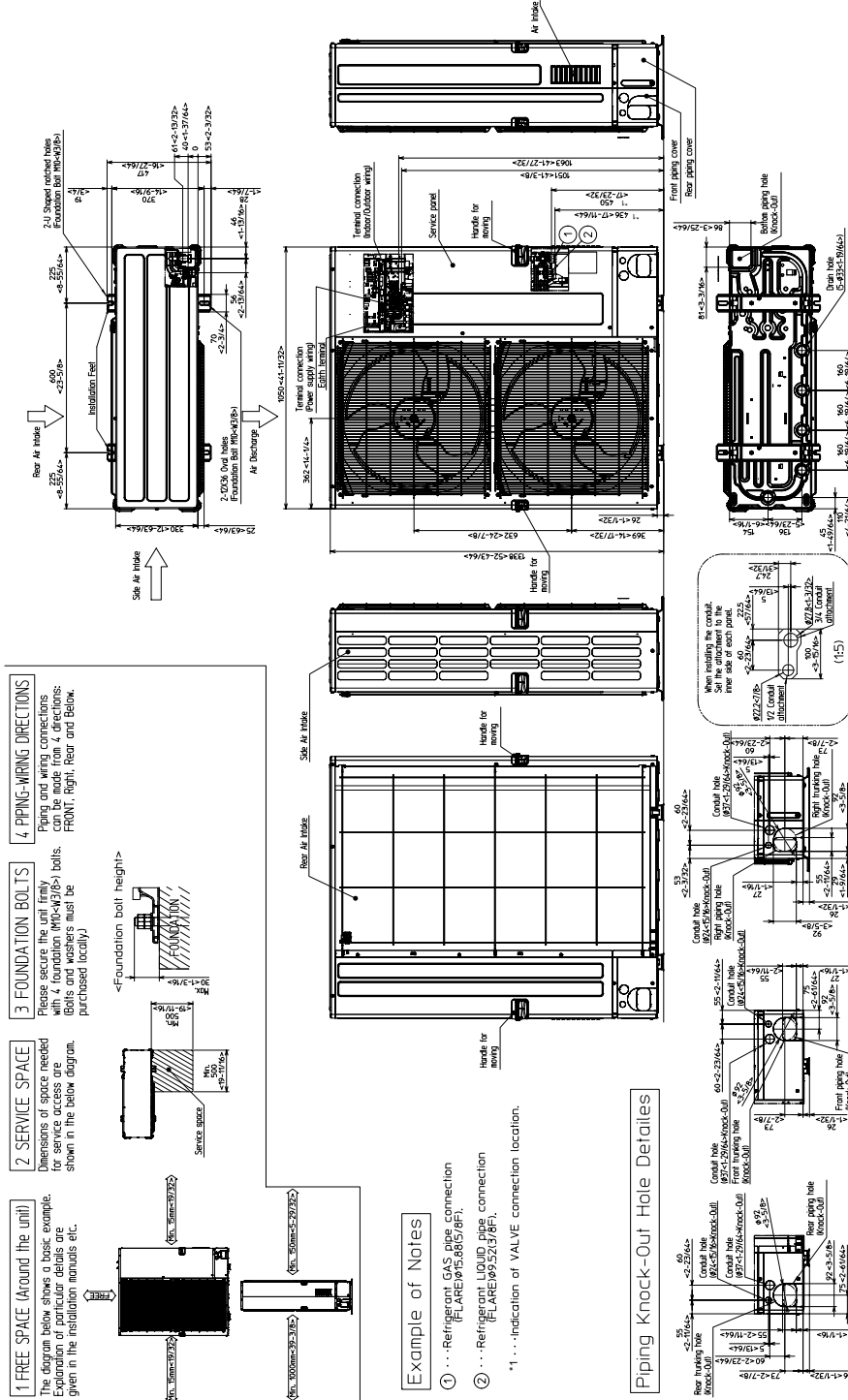


| MODELS                  | ①                       | ②                       | A         | B         | C         | D         | E         | F         |
|-------------------------|-------------------------|-------------------------|-----------|-----------|-----------|-----------|-----------|-----------|
| REGULATORY PREPARAS     | REGULATORY PREPARAS     | REGULATORY PREPARAS     | 10.2(260) | 10.2(260) | 10.2(260) | 10.2(260) | 10.2(260) | 10.2(260) |
| DRYER CONNECTION LINE   | DRYER CONNECTION LINE   | DRYER CONNECTION LINE   | 11.1(281) | 11.1(281) | 11.1(281) | 11.1(281) | 11.1(281) | 11.1(281) |
| REFRESH AIR INTAKE LINE | REFRESH AIR INTAKE LINE | REFRESH AIR INTAKE LINE | 11.1(281) | 11.1(281) | 11.1(281) | 11.1(281) | 11.1(281) | 11.1(281) |
| DRYER CONNECTION LINE   | DRYER CONNECTION LINE   | DRYER CONNECTION LINE   | 11.1(281) | 11.1(281) | 11.1(281) | 11.1(281) | 11.1(281) | 11.1(281) |
| REFRESH AIR INTAKE LINE | REFRESH AIR INTAKE LINE | REFRESH AIR INTAKE LINE | 11.1(281) | 11.1(281) | 11.1(281) | 11.1(281) | 11.1(281) | 11.1(281) |
| DRYER CONNECTION LINE   | DRYER CONNECTION LINE   | DRYER CONNECTION LINE   | 11.1(281) | 11.1(281) | 11.1(281) | 11.1(281) | 11.1(281) | 11.1(281) |



# OUTDOOR UNIT DIMENSIONS: PUZ-HA36NKA

Unit: mm<in>



1340 Satellite Boulevard Suwanee, GA 30024  
Toll Free: 800-433-4822 www.mehvac.com

